

CORRECTION

Open Access

Correction: Early evolution of the biotin-dependent carboxylase family

Jonathan Lombard and David Moreira*

Correction

After publication of our work [1], we noticed several major mistakes in the figure images provided for final publication: although the main text and the legends are correct, Figure three (Figure 1) has been replaced by an image present in the Addition file 1 and Figure four (Figure 2), Figure five (Figure 3) and Figure six (Figure 4) are displaced with regard to their correct numbers and legends. Please, accept our apologies and refer to the correct corresponding Figure three (Figure 1), Figure four (Figure 2), Figure five (Figure 3) and Figure six (Figure 4) that we provide in this erratum. Legends are the same as in the original article.

* Correspondence: david.moreira@u-psud.fr
Unité d'Ecologie, Systématique et Evolution, UMR CNRS 8079, Univ. Paris-Sud,
Paris-Sud, Orsay Cedex 91405, France

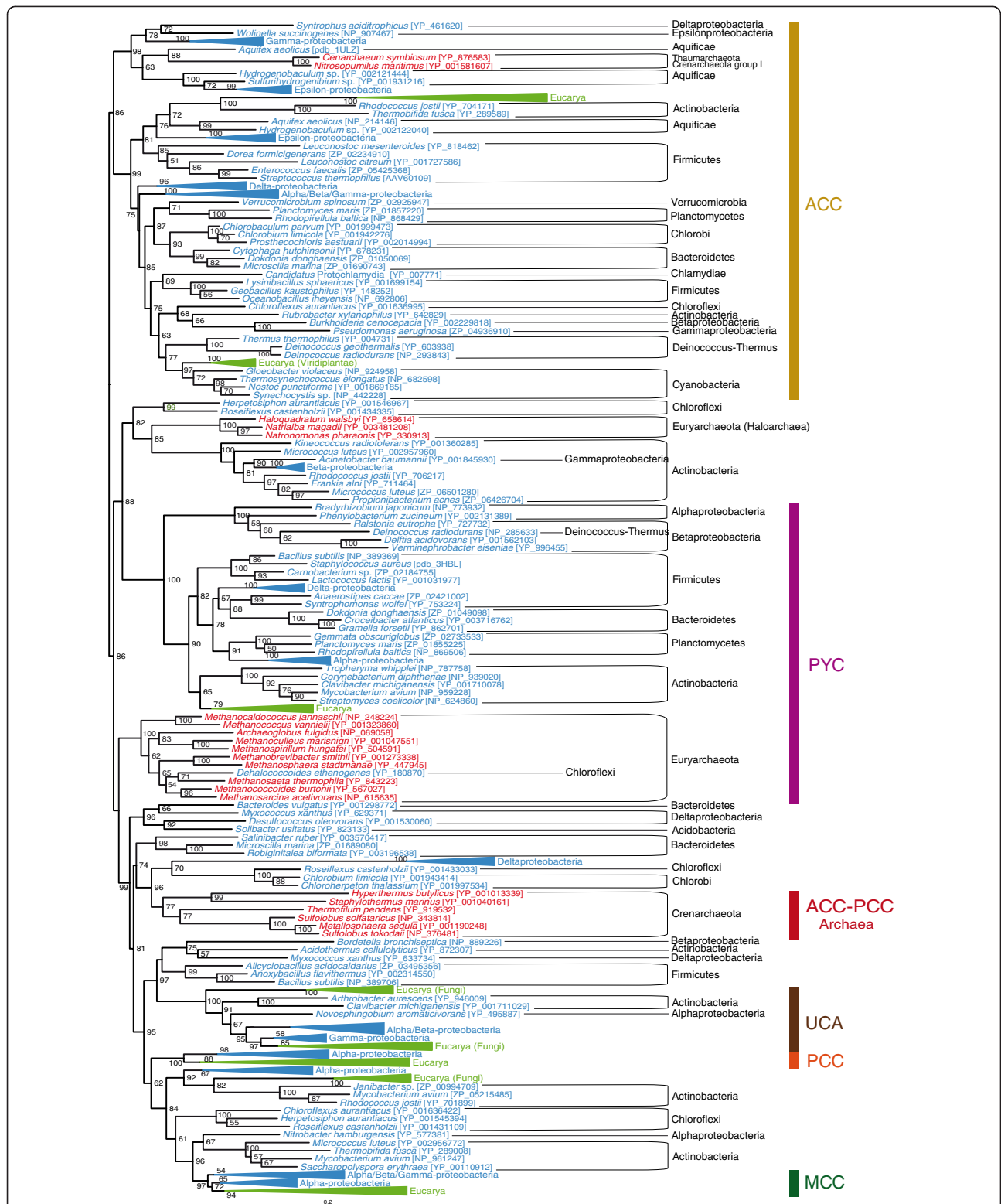


Figure 1 Maximum likelihood tree of the biotin carboxylase (BC) domain. This tree is based on 284 representative sequences and 384 conserved sites and was arbitrarily rooted on the bacterial ACC-related sequences. Numbers at nodes indicate bootstrap values higher than 50. Triangles correspond to collapsed groups of eukaryotes and Proteobacteria. Colors on leaves represent the affiliation of the sequences to their respective domain of life: archaea (red), bacteria (blue) and eukaryotes (green). Bars on the right report the functional assignment of the sequences; sequences that are not in front of any bar are assumed to bear an acyl-CoA carboxylase activity.

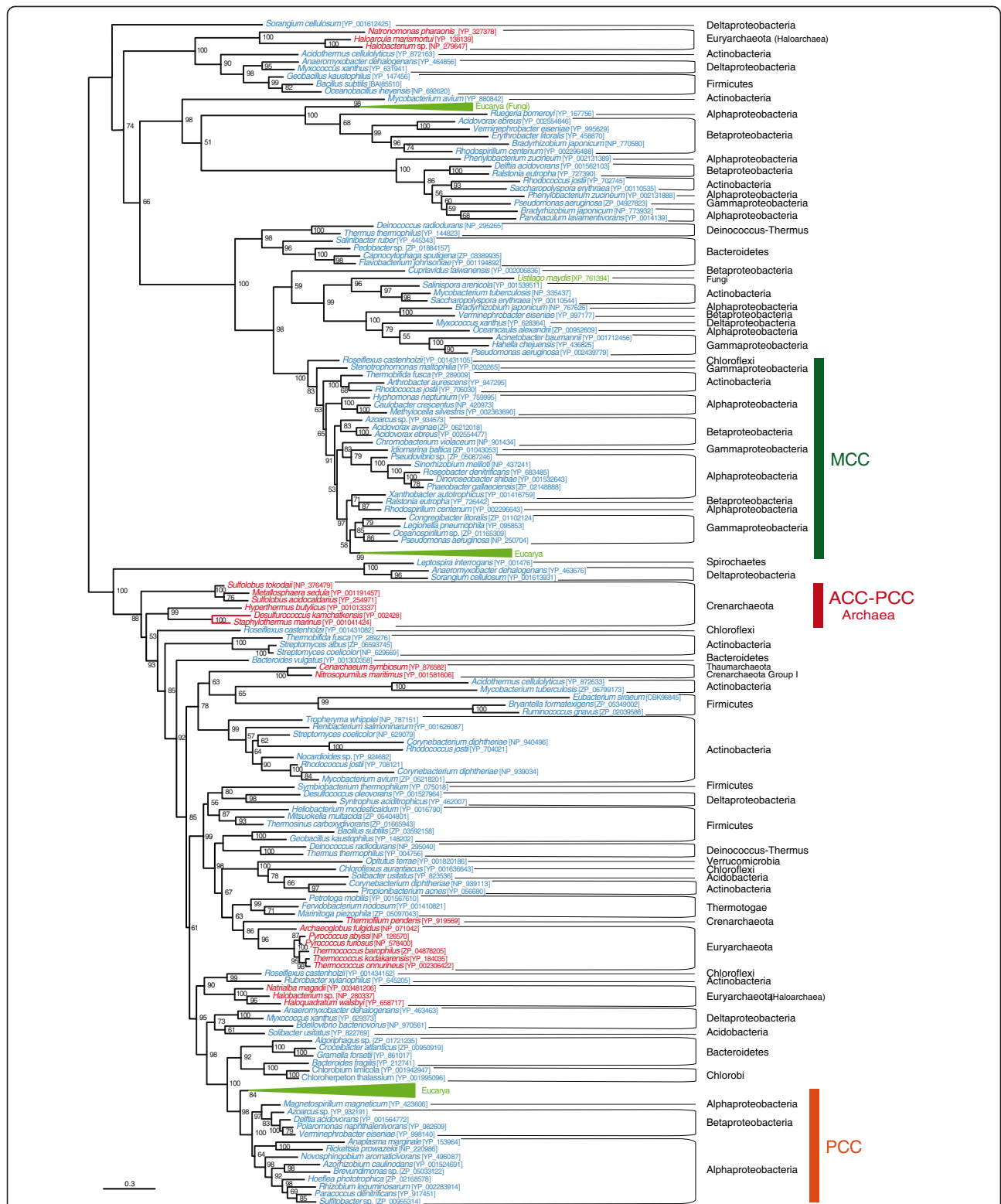


Figure 3 Maximum likelihood tree of CoA-substrate related carboxyl transferase (CCT) domain sequences. This tree is based on 179 representative sequences and 438 conserved sites and was midpoint rooted. Numbers at nodes indicate bootstrap robustness values higher than 50. Triangles correspond to collapsed groups of eukaryotes. Colors on leaves represent the affiliation of the sequences to their respective domain of life: archaea (red), bacteria (blue) and eukaryotes (green). Bars on the right report the functional assignment of the sequences; sequences that are not in front of any bar are assumed to bear an acyl-CoA carboxylase activity.

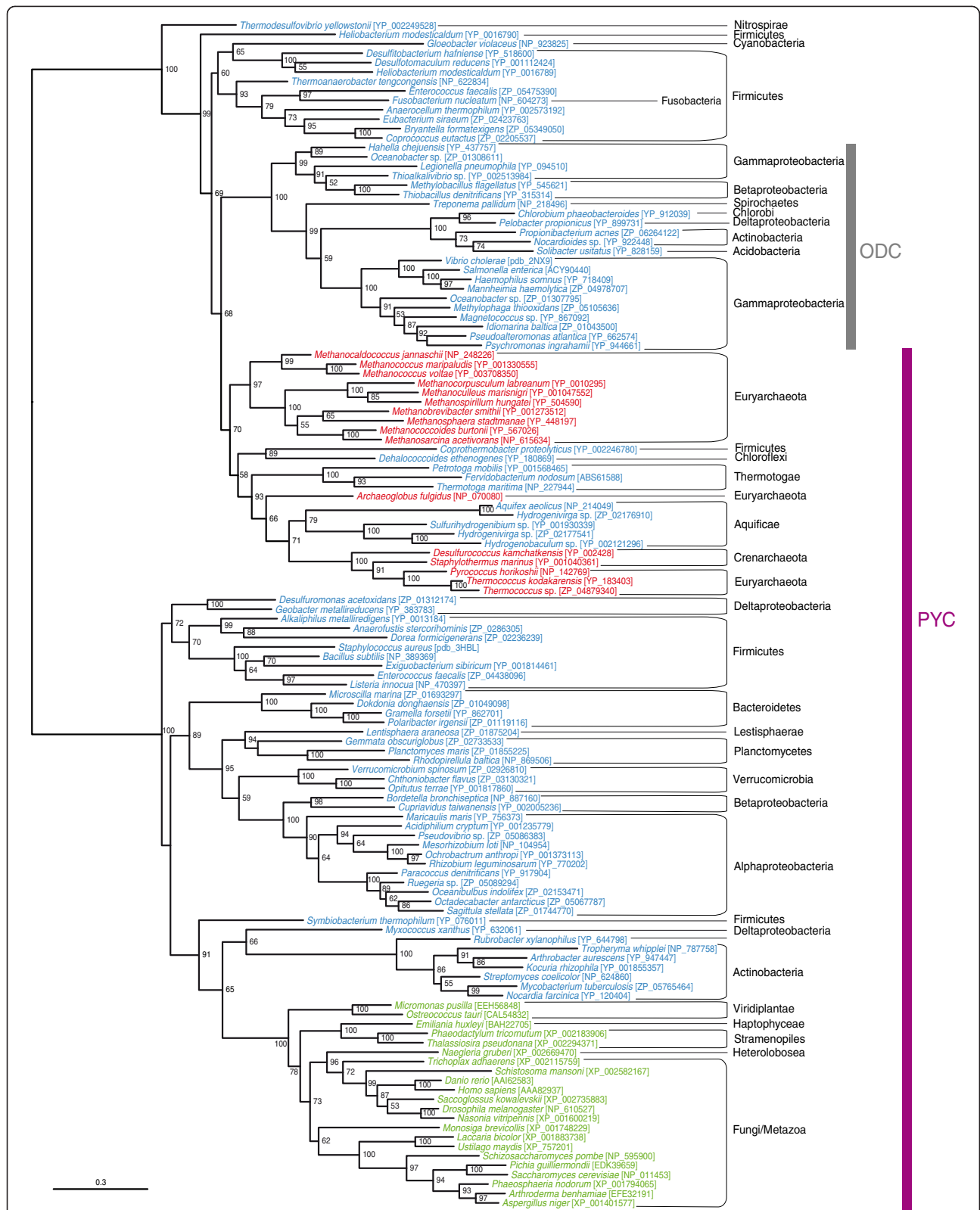


Figure 4 Maximum likelihood tree of pyruvate carboxylase carboxyl transferase (PCT) domain sequences. This tree is based on 126 representative sequences and 432 conserved sites and was midpoint rooted. Numbers at nodes indicate bootstrap robustness values higher than 50. Colors on leaves represent the affiliation of the sequences to their respective domain of life: archaea (red), bacteria (blue) and eukaryotes (green). Bars on the right report the functional assignment of the sequences; sequences that are not in front of any bar have unknown function.

Competing interests

The authors declare no competing interests.

Authors' contributions

JL and DM designed research; JL carried out phylogenetic analyses, and JL and DM wrote the manuscript. Both authors read and approved the final version.

Received: 2 May 2012 Accepted: 11 May 2012

Published: 20 July 2012

References

1. Lombard J, Moreira D: **Early evolution of the biotin-dependent carboxylase family.** *BMC Evol Biol* 2011, **11**:232.

doi: 10.1186/1471-2148-12-117

Cite this article as: Lombard and Moreira: **Correction: Early evolution of the biotin-dependent carboxylase family.** *Correction: Early evolution of the biotin-dependent carboxylase family.* *BMC Evolutionary Biology* 2012 **12**:117.

**Submit your next manuscript to BioMed Central
and take full advantage of:**

- Convenient online submission
- Thorough peer review
- No space constraints or color figure charges
- Immediate publication on acceptance
- Inclusion in PubMed, CAS, Scopus and Google Scholar
- Research which is freely available for redistribution

Submit your manuscript at
www.biomedcentral.com/submit

